



### Overview:

A very strong and versatile three-section couch featuring an adjustable angle backrest and foot section support for positioning the patient for various sitting or lying procedures. Both the backrest and foot section are easily adjustable and there is a choice of hydraulic or electric height operation. A wide range of options are available to personalise the couch for various examination procedures and to meet user requirements.

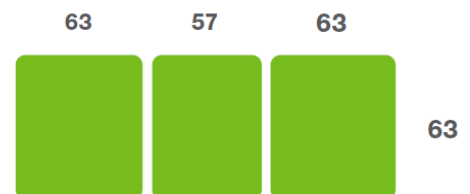
### Benefits

- Lifetime frame & 5 year parts guarantee - see website for further details
- Adjustable angle backrest for supporting the patient in a sitting position  
Positive and negative adjustment of backrest angle (-20° to +85°)
- Adjustable foot section from -20° to +85°
- Choice of electric or hydraulic height operation
- Safe working load and lifting capacity of 250kg (550lb / 39 stone)
- Retractable wheel system provides easy movement and positioning of the couch
- Low patient transfer height of 47cm (18")
- Wide choice of options, width and accessories to meet your requirements

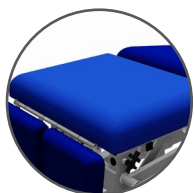
### Overall Dimensions

Length: 183cm (72") approx  
 Width: 63cm (25") approx  
 Height: 47cm - 97cm approx  
 (19" - 38") approx

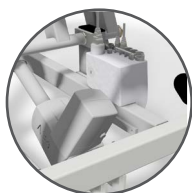
### Upholstery Dimensions



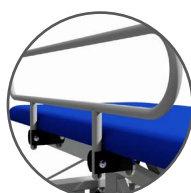
### Options & Accessories:



Pressure Relieving Foam



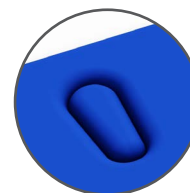
Battery Back-up



Fold-down Side Support Rails



Motorised Backrest

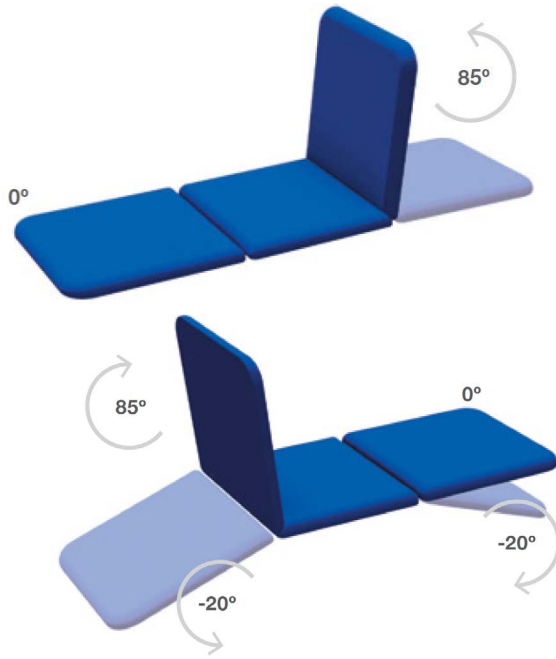


Breathing Hole



Paper Roll Holder

## Operational Parameters



Model 503E - Electric Version

Model 503H - Hydraulic Version

## Standard Features

- Designed and manufactured in the UK
- Lifetime frame & 5 year parts guarantee
- 16 year average lifespan
- Hydraulic or electric height operation
- Comfort foam
- Easy operation
- Low running costs
- Hardwearing anti-microbial vinyl
- Safe working load 250kg
- Retractable castors
- Hoist clearance 130mm
- Anti-entrapment back & foot rest

## Technical Standards

- IP Rating - IPx4
- EEC Classification - MDD93/42/EEC Annex IX Class 1
- Electrical Standard - IEC601 Part 1 + 60601 P (EN)
- Vinyl Flame Retardant to CRIB 5 (BS 7176)
- Foam to BS 5852: Part 2: 1982, Ignition Source 5 [CRIB 5]
- CE Marked
- Externally audited to ISO9001:2015 by LRQA

## Delivery Promise

- Delivery to UK mainland in just 7-10 working days
- Faster service may be available if required
- Overseas delivery 7-10 days plus shipping time

## Upholstery Vinyl

- Flame retardant to BS 5852 Ignition Source 5 - CRIB 5 (BS 7176) Medium Hazard
- Independently tested to verify effectiveness at reducing the spread of MRSA, E.coli & other similar bacteria & fungi
- Rated at 500,000 Martindale rubs without damaging or marking the top layer, making it suitable for all high-traffic, heavy-duty areas
- Phthalate free
- Please note: If the upholstery colour is not specified, 'Almond' will be supplied



Jasmine



Battleship



Cobalt



Cocoa



Grape



Mulled Wine



Pillarbox



Gingersnap



Candy



Applemint



Sapphire



Atlantic Blue



Lupin



Denim



Cool Blue



Rainforest



Wasabi



Citrus Green



Marigold



Almond

Plinth Medical Ltd  
Barric Lane  
Occold, Eye  
Suffolk, United Kingdom  
IP23 7PX

t: +44 (0)1449767887  
e: sales@plinthmedical.com  
www.plinthmedical.com

**Plinth** | Medical